

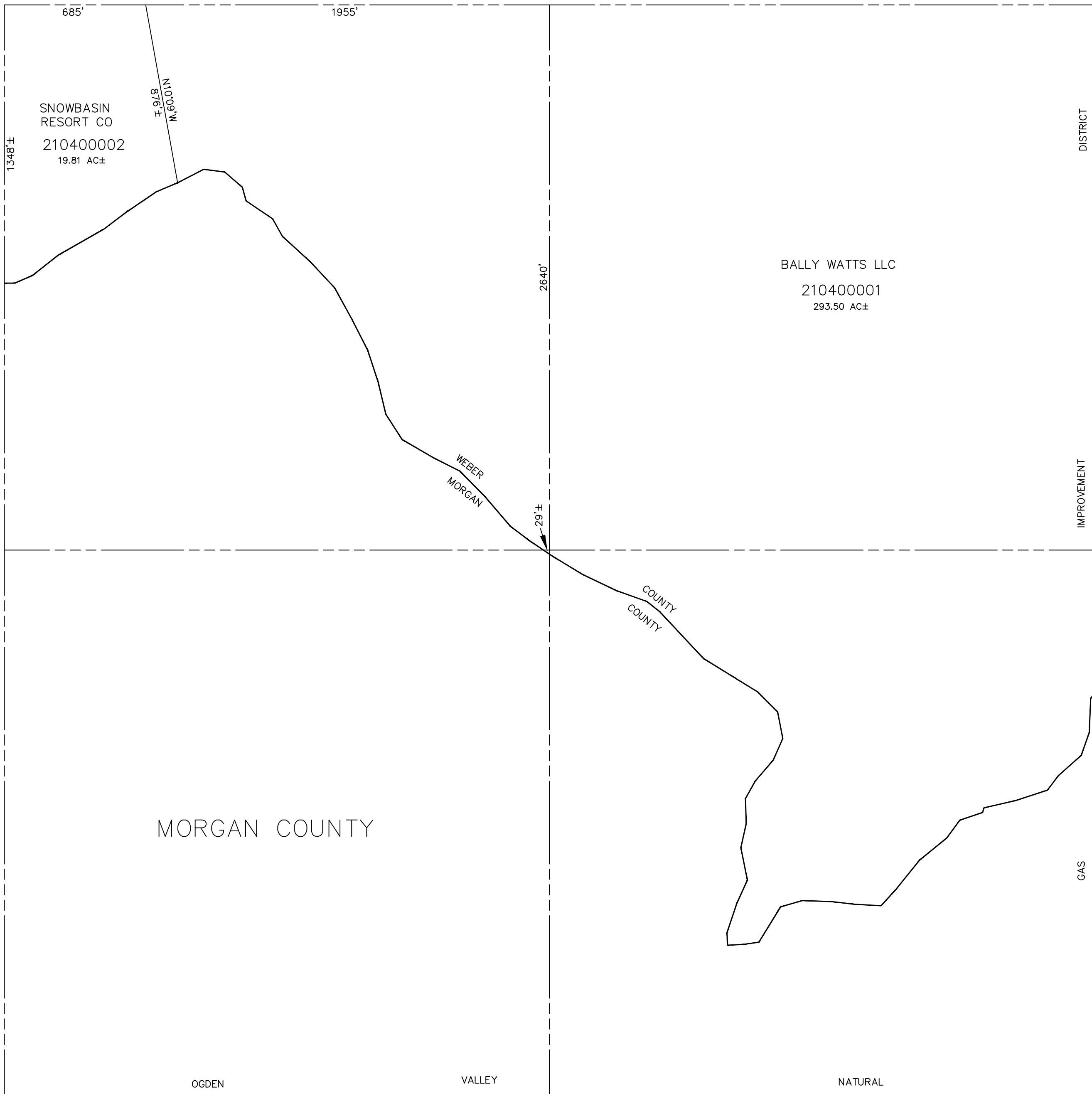
SECTION 31, T.6N., R.2E., S.L.B. & M.

IN WEBER COUNTY

SCALE 1" = 400'

TAXING UNIT: 318

SEE PAGE 39



SEE BOOK 20, PAGE 44

SEE PAGE 41

MORGAN COUNTY

OGDEN

VALLEY

NATURAL

GAS

DISTRICT

IMPROVEMENT

NOTE: WEBER/MORGAN ASSESSMENT LINE CHANGED TO COUNTY LINE - 1998

SEE BOOK 23, PAGE 6